



FAMILY of PRODUCTS

***Walker Products — Precision Engine Management Components
Engineered, tested, and validated to exact OE standards for
modern light-duty and passenger vehicles.***

ABS WHEEL SPEED SENSORS



- **OE-Precision Speed Data:** Supports ABS, traction, and stability control systems.
- **High-Speed Signal Output:** Improves safety and braking response.
- **Fully Sealed Sensor Body:** Prevents water and debris intrusion.
- **OE Brackets and Connectors:** Allow quick and accurate installation.

AIR CHARGE TEMPERATURE SENSORS



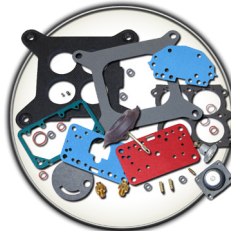
- **Rapid Thermal Response:** Enables accurate ignition timing and cold-start fueling.
- **Precise Intake Temperature Data:** Improves combustion efficiency and performance.
- **Sealed Sensor Design:** Resists moisture and debris contamination.
- **OE Connector Interface:** Ensures quick, plug-and-play installation.

CAM AND CRANK POSITION SENSORS



- **Exact OE Timing Signals:** Synchronize ignition and fuel injection events.
- **Fast High-Resolution Output:** Prevents misfires and hard starts.
- **Sealed Against Oil & Moisture:** Ensures durability in harsh environments.
- **OE Plug Configuration:** Enables easy, error-free installation.

CARBURETION



- **OE-Calibrated Fuel Delivery:** Restores original performance and drivability.
- **Precision-Machined Components:** Provide smooth throttle response and idle quality.
- **Modern Fuel Compatibility:** Resists ethanol-related degradation.
- **Complete Assortment:** Supports full carburetor service and rebuilds.

ENGINE COOLANT TEMPERATURE SENSORS



- **Precise Temperature Feedback:** Regulates fan control, fueling, and ignition timing.
- **Fast Warm-Up Response:** Improves cold start and emissions performance.
- **Corrosion-Resistant Brass Housings:** Ensure long-term reliability.
- **OE Connector Termination:** Allows quick, no-modification replacement.

EXHAUST GAS TEMPERATURE SENSORS



- **Real-Time Thermal Monitoring:** Protects DPFs and turbochargers from overheating damage.
- **Ultra-Fast Response Elements:** Deliver immediate feedback for precise emissions control.
- **Extreme Heat Resistance:** Validated to withstand continuous high exhaust temperatures.
- **OE-Length Harness & Connector:** Enables seamless routing and installation.

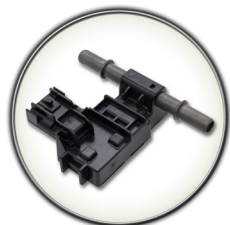
EXHAUST BACK PRESSURE SENSORS



- **Critical DPF System Monitoring:** Accurately tracks backpressure to control regeneration events.
- **OE-Validated Output Stability:** Minimizes false codes and unnecessary service interventions.
- **High-Temperature Corrosion Protection:** Engineered for the severe conditions of exhaust systems.
- **Exact OE Dimensional Fit:** Pre-configured and ready to install for flawless performance.

**Get more details at
walkerproducts.com**

FLEX FUEL SENSORS



- **High-Accuracy Ethanol Content Sensing:** Enables optimal fueling strategy for flex-fuel vehicles.
- **Rapid Response Time:** Allows seamless transitions between fuel blends for consistent performance.
- **Robust OE-Style Electronics:** Built to endure heat, vibration, and contamination.
- **Plug-and-Play Connector Design:** Ensures secure, trouble-free electrical connection.

FUEL INJECTOR SEAL & REPAIR KITS



- **OE-Grade Sealing Technology:** Manufactured from premium fuel-resistant materials for long-lasting durability with ethanol-blended fuels.
- **Restores Original Fuel System Integrity:** Eliminates leaks and evaporative emissions to return vehicles to factory performance.
- **Complete Professional Kits:** Includes all critical seals, spacers, and hardware for a comprehensive, first-time-right repair.
- **Precision-Machined Fitment:** Designed to OE dimensional tolerances to ensure effortless installation and leak-free operation.

FUEL PRESSURE REGULATORS



- **OE-Calibrated Pressure Control:** Delivers consistent fuel pressure to maintain precise air/fuel ratios.
- **Engineered for Modern Fuel Systems:** Withstands today's high-pressure, high-temperature conditions.
- **Corrosion-Resistant Housings:** Extend service life in harsh underhood environments.
- **Direct-Fit OE Replacement:** Pre-calibrated and ready to install without adjustment or modification.

IDLE SPEED CONTROL MOTORS



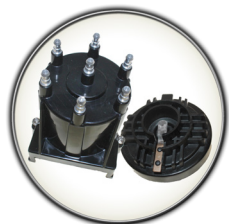
- **OE-Calibrated Stepper Control:** Maintains stable idle under varying loads and temperatures.
- **Precision Machined Housing:** Ensures consistent airflow and long-term reliability.
- **Heat & Contamination Resistant:** Prevents sticking and carbon buildup.
- **Direct OE Fit:** No adjustments or programming needed after installation.

IGNITION COILS



- **High-Energy Output:** Produces strong spark for complete combustion under load.
- **OE-Spec Windings & Insulation:** Reduce misfires and improve fuel efficiency.
- **Epoxy Encapsulation:** Shields internals from heat, moisture, and vibration.
- **Exact Fit Design:** Provides quick, reliable installation.

IGNITION DISTRIBUTOR CAPS & ROTORS



- **Premium OE Contact Materials:** Ensure consistent spark delivery.
- **Precision Molded Housings:** Prevent arcing and moisture intrusion.
- **Dynamic Balance & Alignment:** Reduce wear and extend service life.
- **OE Fit & Function:** Simplifies installation and guarantees compatibility.

IGNITION WIRE SETS



- **Ultra-Low Resistance Cores:** Maximize spark energy for complete combustion.
- **High-Temp Silicone Boots:** Protect against heat and chemical damage.
- **OE Length and Routing:** Prevent crossfire and ease installation.
- **Pre-Terminated Ends:** Enable fast, tool-free service.

KNOCK SENSORS



- **High-Sensitivity Detection:** Identifies detonation to protect internal components.
- **OE-Calibrated Frequency Range:** Provides precise spark timing control.
- **Durable Construction:** Resists vibration, heat, and contamination.
- **Pre-Torqued Mounts:** Guarantee accurate readings on installation.

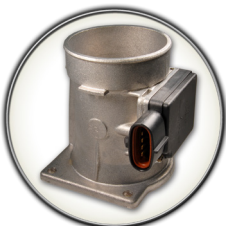
Get more details at
walkerproducts.com

MANIFOLD ABSOLUTE PRESSURE SENSORS



- **Accurate MAP Readings:** Support precise engine load calculations.
- **OE-Validated Response Curve:** Ensures smooth idle and throttle transitions.
- **High-Temp Electronics:** Operate reliably in extreme underhood heat.
- **Plug-and-Play Fit:** Requires no programming or calibration.

MASS AIR FLOW SENSORS



- **Highly Accurate Airflow Measurement:** Ensures precise fuel metering and combustion control.
- **OE-Validated Electronics:** Provide stable signals under all operating conditions.
- **Contaminant-Resistant Design:** Protects sensing elements from damage.
- **Direct-Fit Housing:** Speeds installation and reduces comebacks.

NOx SENSORS (100% Genuine OE)



- **Authentic OE Manufacturing:** Built exclusively by the same Tier 1 supplier that produces the original part.
- **Precise NOx Measurement:** Provides accurate data to support SCR and aftertreatment system efficiency.
- **Fast ECU Response Support:** Enables real-time emissions corrections for cleaner combustion.
- **Direct OE Fitment:** 100% plug-and-play installation with zero calibration required.

OIL PRESSURE SWITCHES



- **Accurate Pressure Detection:** Protects the engine from lubrication failure.
- **OE-Calibrated Set Points:** Ensure precise warning light activation.
- **Corrosion-Protected Housings:** Deliver long-lasting service in harsh environments.
- **OE Electrical Connectors:** Speed installation and ensure reliable connection.

QUALITY • COVERAGE • SUPPORT

OXYGEN SENSORS



Walker Products offers the most intelligent oxygen sensor program in the industry — featuring both a Genuine OE-Based Sensor line and an Ultra Premium OE Replacement line.

- **Genuine OE-Based Sensors:** Built on actual OE platforms for exact fit, function, and durability.
- **Ultra Premium OE Replacement Sensors:** Engineered and validated to meet or exceed OE performance in all conditions.
- **Fast Light-Off Response:** Improves cold-start emissions and fuel efficiency.
- **Pre-Assembled Connectors & Harnesses:** Enable rapid plug-and-play installation.

TEMPERATURE INDICATOR SWITCHES



- **Accurate Overheat Warnings:** Prevents thermal engine damage.
- **OE-Specified Set Points:** Trigger at the correct temperature thresholds.
- **Rugged Internal Contacts:** Resist heat and vibration.
- **Direct Thread-In Fit:** Simplifies installation and seals reliably.

THROTTLE POSITION SENSORS



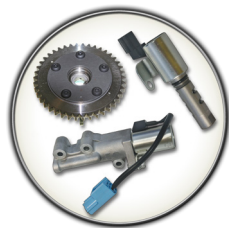
- **Precise Throttle Angle Feedback:** Enables smooth acceleration and shift timing.
- **Stable OE-Calibrated Output:** Improves fuel economy and emissions.
- **Wear-Resistant Design:** Delivers long service life under repeated cycling.
- **Simple Bolt-On Fit:** Requires no calibration or adjustment.

TPMS SENSORS (100% Genuine Tier 1 Produced)



- **Authentic Tier 1 Construction:** Sourced directly from an OE Tier 1 manufacturer for uncompromising quality.
- **Cloneable Technology:** Allows direct programming to match any OE sensor for fast service.
- **Sealed to OE Standards:** Withstands extreme temperature, moisture, and road conditions.
- **Universal Fit Coverage:** One part number covers multiple OE applications to simplify inventory.

VARIABLE VALVE TIMING SOLENOIDS & SPROCKETS



- **OE-Specified Timing Control:** Optimizes power delivery and fuel economy.
- **Rapid Actuation Response:** Improves throttle response and torque at all speeds.
- **Sludge-Resistant Design:** Maintains performance even in extended service intervals.
- **Direct OE Fitment:** Simplifies service and ensures proper alignment.

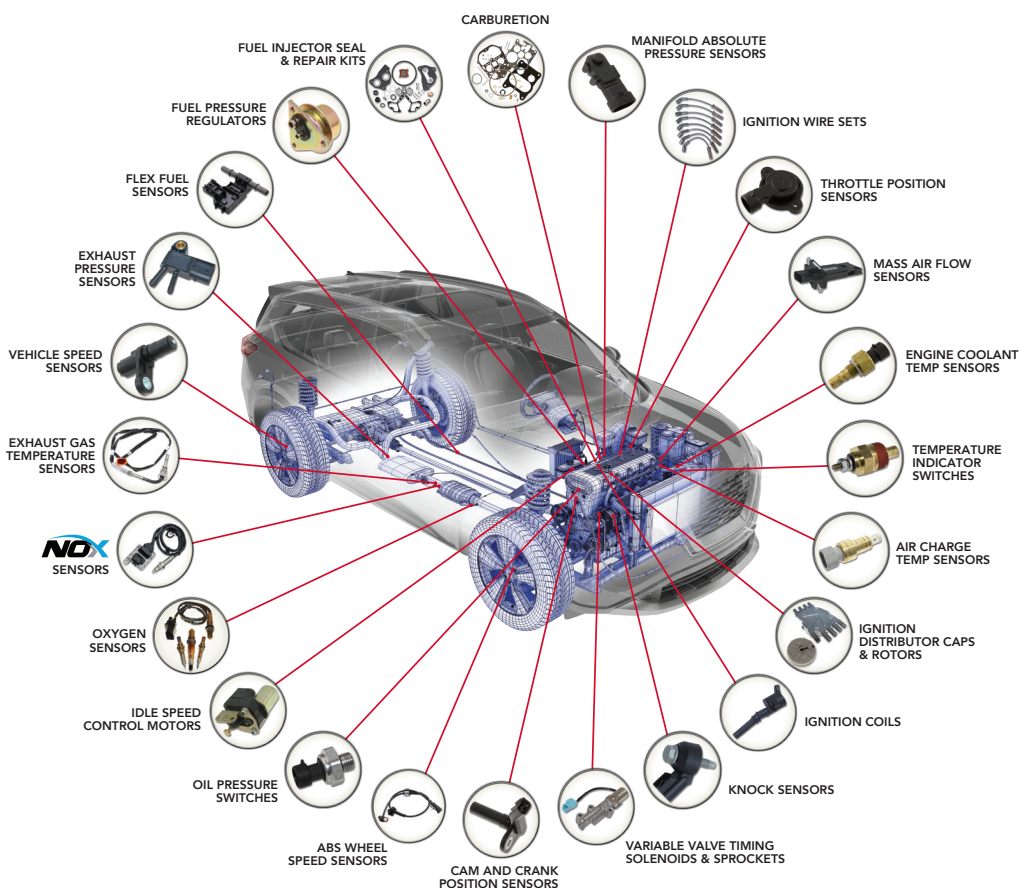
VEHICLE SPEED SENSORS



- **Precision Speed Measurement:** Ensures accurate transmission shifting, ABS, and cruise control operation.
- **OE-Calibrated Output Signals:** Provide stable feedback for drivability and diagnostics.
- **Sealed Electronic Modules:** Protect against water, debris, and corrosion.
- **Factory-Fit Installation:** Matches OE connector and bracket designs for quick replacement.

COMPLETE ENGINE MANAGEMENT SOLUTIONS

All Makes • All Models



WALKER PRODUCTS, INC. • 525 WEST CONGRESS STREET • PACIFIC, MO 63069 • www.walkerproducts.com
 U.S. Corporate Office: 636-257-2400 • Fax: 636-257-6211
 Customer Service: 636-257-1700 • Technical Support: 844-252-0114
 UK/European Sales Office: +44 (0) 121-459-8006 • saleseurope@walkerproducts.com
 Oficinas para Mexico: +52-72-2402-2167 • Soporte tecnico y servicio al cliente en Mexico: +52-72-2207-8957



QUALITY • COVERAGE • SUPPORT