

X-Tracker

A unique line of high performance hub units from SKF

Developed in response to OE requests for a high performing hub bearing unit that provides precision handling and braking characteristics, SKF engineers developed the X-Tracker hub bearing. The X-Tracker is a performance hub unit that will deliver improved handling and comfort characteristics to cars, light duty trucks and SUVs.

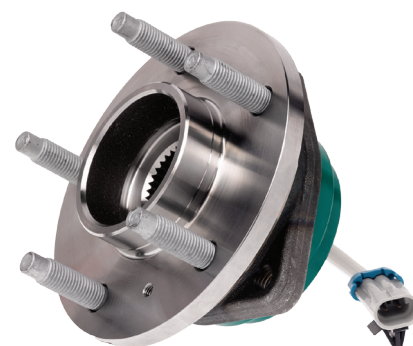
**SKF PREMIUM
HUBS ARE
100% TESTED
TO ACTUAL
OE SPECS**

Designed specifically for cars,
light duty trucks and SUVs.

- Double row angular contact ball bearing arrangement
- Outboard row at a higher diameter; contains more balls than the inner row
- Increases bearing's capacity while improving hub stiffness by 50% over a traditional bearing unit

Benefits

- Allows wheel to run truer during cornering and acceleration
- Reduces deflection of hub face and wheel; provides better steering, handling and vehicle dynamic behavior
- Reduces brake wear due to true running of rotors; helps reduce brake warranty costs
- Improves both NVH (noise/vibration/harshness) characteristics and bearing performance
- Longer service life
- Alternative to tapered bearing unit



View detailed technical and product videos at www.skfpartsinfo.tv



Follow us on Twitter [@skfpartsinfo](https://twitter.com/skfpartsinfo) to stay on top of all the latest technical and product information.

SKF VSM NA
890 N. State Street
Suite 200
Elgin, IL 60123
800-882-0008
www.vsm.skf.com

SKF X-Tracker series hub units

Roll forming

- Provides precision bearing preload and overall strength of the hub assembly for secure clamping to the CV joint and knuckle for increased safety

Premium hub wheel bearings

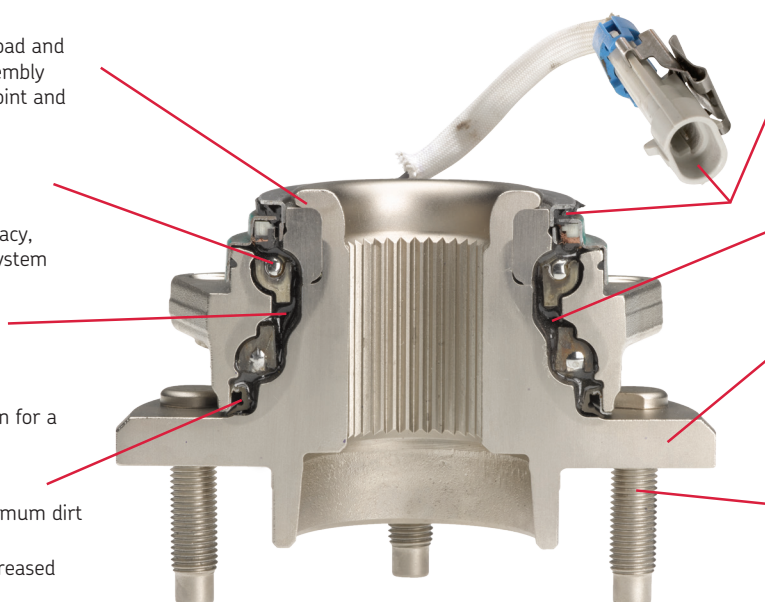
- Increased ride comfort
- Improves vehicle steering accuracy, handling dynamics and brake system performance

Bearing cage

- Provides superior load capacity
- Lower stress on the raceway
- Provides a smooth roll operation for a comfortable ride

Seal

- Multiple lip design provides optimum dirt and contaminate exclusion
- Keeps grease in the hub for increased operational life



Anti-lock braking system (ABS) sensor

- OE design
- Assures correct brake response and performance

SKF GHG Grease

- Exclusive, patented formula
- Provides optimum bearing performance and life by minimizing friction

Low lateral run-out

- Improves mating of wheel hub to brake rotor
- Prevents brake pedal pulsation and premature brake component failure

Wheel studs

- OE quality
- High tensile strength
- Prevents wheel-off conditions

X-Tracker applications

Part no.	Application	
BR930080	FW	Chev FWD 2005-97; Olds FWD 2004-97; Pontiac FWD 2005-99
BR930081	FW/RW	Cadillac RWD 2011-03
BR930097	FW	Chev Trk 2005-97; Isuzu Trk 2000-98; Olds Trk 2001-97
BR930184	FW	Buick FWD 2008-03; Chev Inc. APV FWD 2008-00; Pontiac Inc. APV FWD 2008-03
BR930252	FW	Ford Trk 2002-95; Mercury Trk 2001-97
BR930323	FW	Pontiac CUV 2006; Chev CUV 2007-02; Saturn CUV 2007-02
BR930326	FW	Pontiac CUV 2006; Chev CUV 2007-02; Saturn CUV 2007-02
BR930343	FW	Ford Trk 2002-00; Mazda Trk 2002-00
BR930344	FW	Ford Trk 2011-01; Mazda Trk 2009-00
BR930452	FW	Ford Trk 2009-03; Mazda Trk 2009-03
BR930456	FW	Ford Trk 2006-02; Lincoln Trk 2005-03; Mercury Trk 2005-02
BR930470	FW	Chev Trk 2009-02; Isuzu Trk 2008-03; Olds Trk 2004-02; Buick Trk 2007-04; Saab Truck 2009-05
BR930513	FW	Dodge Trk 2005-04
BR930514	FW	Dodge Trk 2010-05; Mitsubishi Trk 2009-06; RAM 2012-11

Part no.	Application	
BR930515	FW	Dodge Trk 2010-05; Mitsubishi Trk 2009-06
BR930523	FW	Dodge Trk 2009-06; Chry CUV 2009-07
BR930537	FW	Cadillac RWD 2009-06
BR930539	FW	Cadillac RWD 2009-06
BR930544	FW/RW	Chev RWD 2013-09
BR930548K	FW	Chev FWD 2014-00; Chev APV 2005-97; Pontiac APV 2005-97; Buick FWD 2011-97; Cadillac FWD 2011-97; Olds FWD 2003-97; Olds APV 2004-97; Pontiac FWD 2008-97; Pontiac CUV 2005-01; Buick CUV 2007-02
BR930555	FW	Cadillac RWD 2014-09; Chev RWD 2014-12
BR930627	FW	Chev APV 2009-06; Saturn 2007-06; Buick Trk 2007-06; Pontiac APV 2009-06
BR930674	FW	Cadillac RWD 2014-08; Chev RWD 2013-10
BR930741	FW	Ford Trk 2010-06; Mercury Trk 2010-06
BR930777	FW/RW	Buick FWD 2014-10; Cadillac FWD 2014-13; Chev FWD 2014-13; Saab 2011-10; Chev CUV 2013-10
BR930792	FW	(4 W/D) Ford Trk 2011-09; Mazda Trk 2010
BR931001	RW	Chev RWD 2017-14
BR931002	FW	Chev RWD 2017-14

FW - Front Wheel RW - Rear Wheel

For a complete listing of X-Tracker application information, please go to <http://www.showmethetheparts.com/skf/>

© SKF and X-Tracker are registered trademarks of the SKF Group.

© SKF Group 2018

The contents of this publication are the copyright of the publisher and may not be reproduced (even extracts) unless permission is granted. Every care has been taken to ensure the accuracy of the information contained in this publication but no liability can be accepted for any loss or damage whether direct, indirect or consequential arising out of the use of the information contained herein.

Publication 457891 • rev. 02/18 • Printed in U.S.A.