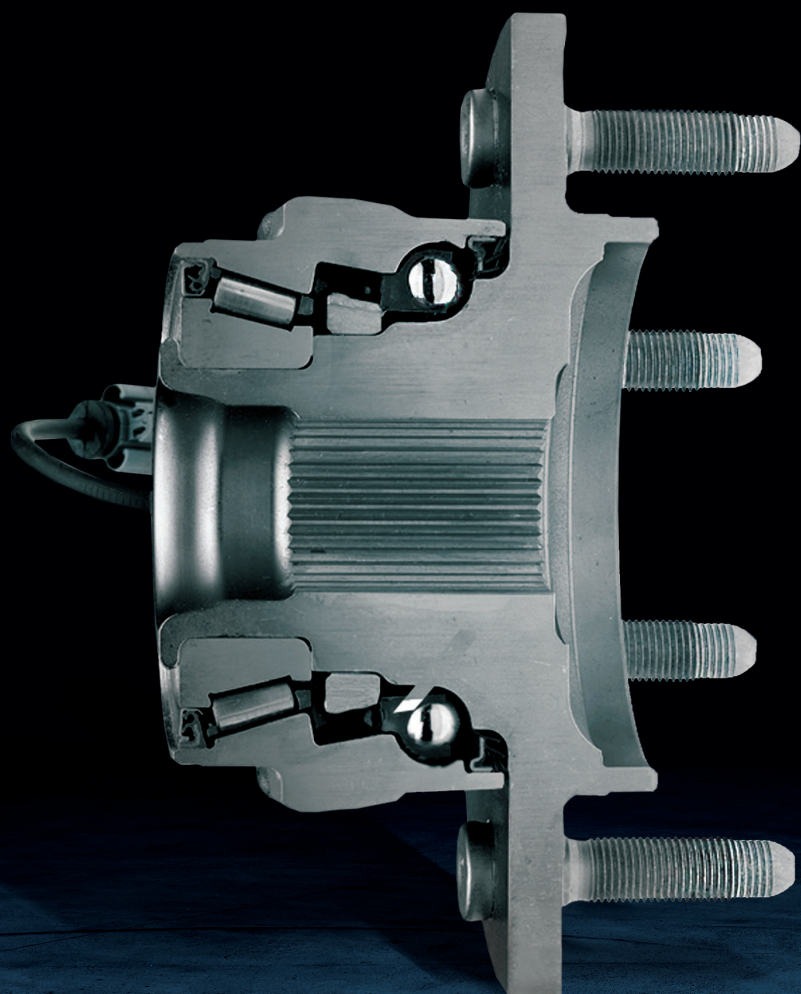


X-Tracker Hybrid

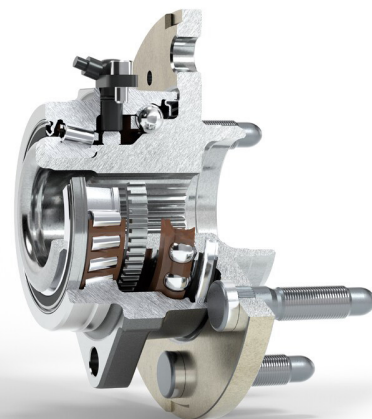
A unique line of high performance hub units from SKF



The **X-Tracker Hybrid** provides perfect vehicle dynamic behavior for SUVs and light trucks, great for supporting larger diameter tires and increased wheel off sets.

The unique asymmetric ball and roller bearing set design combined within one bearing unit, provides a friction reduction of more than 30% and increased the stiffness by more than 40% compared to standard taper Hub unit.

**SKF PREMIUM
HUBS ARE
100% TESTED
TO ACTUAL
OE SPECS**



Customer Benefits

- Reduced friction
- Improved steering handling and vehicle dynamic behavior, especially during cornering and acceleration due to increase bearing stiffness
- Reduced brake wear and break warranty cost
- Improved noise reduction and vibration due to improved internal geometry and reduced friction



X-Tracker Hybrid applications

Part no.	Application	
BR930284	FW	Dodge Trk 1/2 Ton (2 W/D) 2008-02; (4 W/D) 2008-02
BR930285	FW	Dodge Trk 1/2 Ton (2 W/D) 2005-02; (4 W/D) 2005-02
BR930475	FW	Dodge Trk 3/4 Ton (2 W/D) 2005-03; (2 W/D) 1 Ton 2005-03
BR930637	FW	Nissan Trk (2 W/D) 2007-04; (4 W/D) 2007-04; Infiniti Trk 2007-04
BR930661	FW	Cadillac Trk SUV (AWD); Chev/GMCTrk SUV (AWD) 2014-07; Chev/GMC Trk 1/2 Ton (4 W/D) 2014-07
BR930662	FW	Chev/GMCTrk 3/4 & 1 Ton (2 W/D) 2013-07; 3/4 & 1 Ton (4 W/D) 2013-07; Hummer 2009-08
BR930667	FW	Chev/GMCTrk 1 Ton (2 W/D) 2007-01; 1 Ton (4 W/D) 2007-01

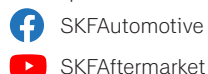
Part no.	Application	
BR930690	FW	Dodge Trk 1/2 Ton (2 W/D) 2009-06; 1/2 Ton (4 W/D) 2009-06
BR930693	FW	Cadillac Trk SUV (2 W/D) 2014-07; Chev/GMCTrk 1/2 & 3/4 Ton (2 W/D) 2014-07
BR930696	FW	Dodge Trk 1/2, 3/4 & 1 Ton (2 W/D) 2008-06
BR930758	FW	Chev/GMCTrkVan (AWD) 2014-09
BR930762	FW	Chev/GMC Trk Van (RWD) 2014-09
BR930783	FW	Chev/GMC Trk 1 Ton (2 W/D) 2010-07; 1 Ton (4 W/D) 2010-07
BR930808	FW	Dodge Trk 1/2 Ton (2 W/D) 2011-09; 1/2 Ton (4 W/D) 2011-09
BR930829	FW	Nissan Trk (2 W/D) 2011-08; (4 W/D) 2011-08; Infiniti Trk 2010-08
BR931000	FW	Chev/GMCTrk 1/2, 3/4 & 1 Ton (4 W/D) 2007-99; Hummer 2007-03
BR931022	FW	Fisker 2012-11, 2019-18

FW - Front Wheel For a complete listing of X-Tracker application information, please go to <http://showmethethparts.com/skf/>



Scan the QR code or visit vehicleaftermarket.skf.com to learn about the latest SKF innovative products and access the complete product range.

Follow SKF Aftermarket on social media for helpful technical videos and assembly instructions.



Contact SKF Customer Support to help resolve your automotive problems and answer your questions: helpline@skf.com